

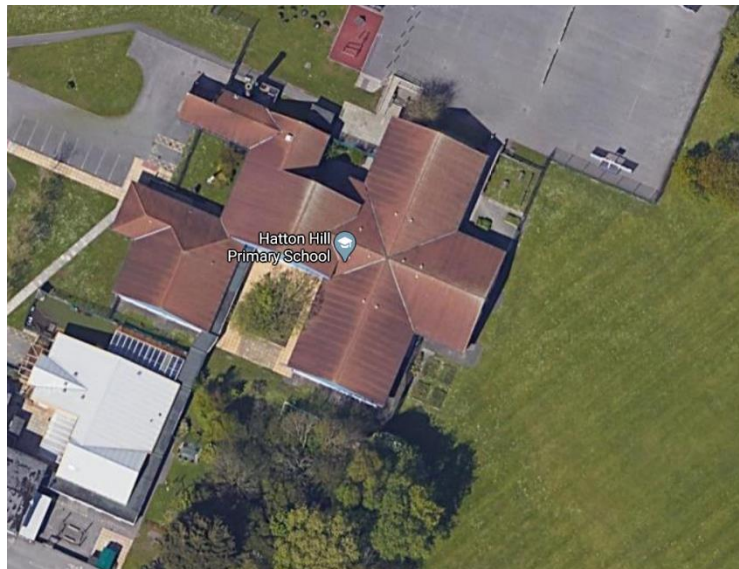
Bur School

National Curriculum Objectives

Pupils should develop knowledge about the world, the United Kingdom and their locality. They should understand basic subject-specific vocabulary relating to human and physical geography and begin to use geographical skills, including first-hand observation, to enhance their locational awareness.

Key Words

| | | | |
|-------|-------------|---------|-------------|
| atlas | physical | grounds | observation |
| map | aerial view | layout | environment |
| human | key | school | locality |



| Objectives | Teacher | Pupil |
|---|---------|-------|
| How can we use maps/aerial photos to find out the layout of our school? | | |
| Can we create our own maps of the school and the surroundings? | | |
| Why is a 'key' important when using a map? | | |
| What physical and human features can we see in and around our school? | | |